

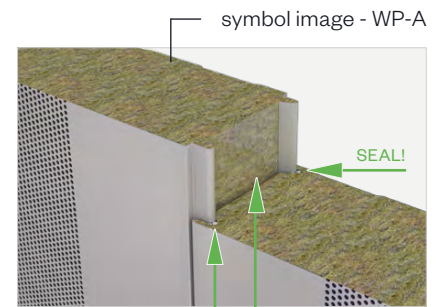
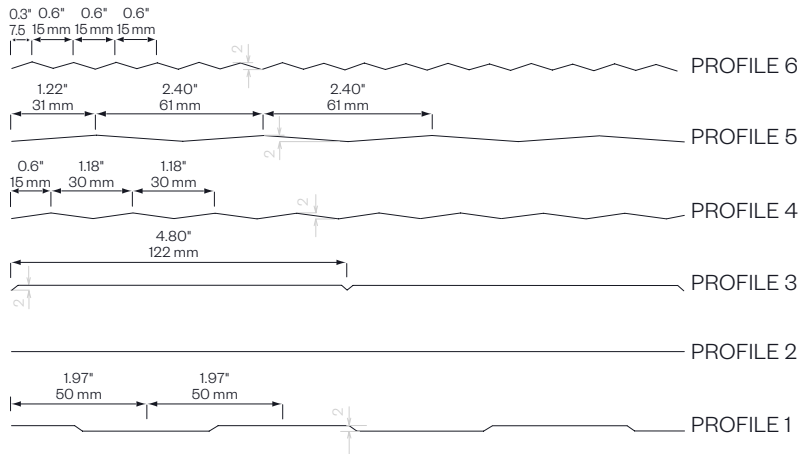
BRUCHA panel WP-A

Acoustic wall exposed fastener / non-combustible



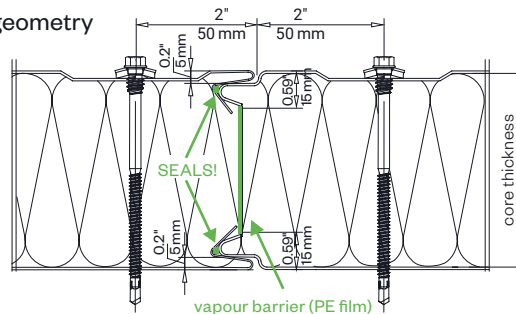
fire protection

exterior PROFILE options - close-up



SOUND INSULATION
32 dB (frequency dependent)

DETAIL/joint geometry



butt joint:
0.08" = 0.08" tolerance
2 mm ± 2 mm tolerance

PANEL TYPE	WP-A 60	WP-A 80	WP-A 100	WP-A 120	WP-A 140	WP-A 150	WP-A 160	WP-A 180	WP-A 200	WP-A 240
core thickness in ≈ inch in mm	2.5" 60	3" 80	4" 100	4.5" 120	5.5" 140	6" 150	6.5" 160	7" 180	8" 200	9.5" 240
R-value thermal performance	9.5	12	15	18	20.5	22	23	26	29	34
weight in lb/ft ² in kg/m ²	3.36 16.39	3.85 18.79	4.34 21.19	4.83 23.59	5.32 25.99	5.57 27.19	5.81 28.39	6.31 30.79	6.80 33.19	7.78 37.99
fire resistance ANSI/UL 263, CAN/ULC-S101	---	---	EI 60	EI 60	EI 60	EI 120	EI 120	EI 120	EI 120	EI 120

SOUND INSULATION

32 dB (frequency dependent)

MANUFACTURING LENGTHS

39' 2" or 11.95 m (44' 3 1/2" or 13.50 m)

R-VALUE

≈ 3.8 per inch @75°F mean temperature

SPAN WIDTH TABLES

according static tables

PERMANENT TEMPERATURE RESISTANCE

176°F/80°C



fire protection

BRUCHA panel WP-A

Acoustic wall exposed fastener / non-combustible

DESIGN AND SURFACES Standard - coil-coated, hot-dip galvanised steel sheet

EXTERIOR

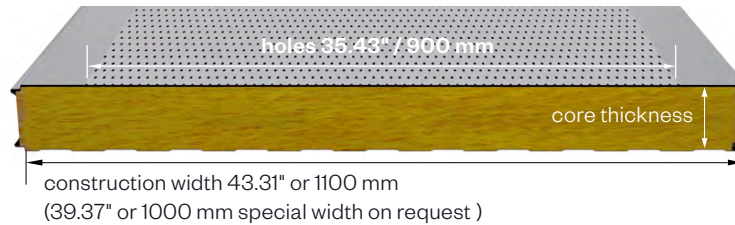
- Exposed side 25 µm polyester coating with a PVC protective film (not UV-resistant - protect from direct sunlight).
The film must be removed before installation or immediately afterwards.
- profile 1 = Standard, for other profiles see WP-A PROFILE options
- metal gauge: 24 ga / 0.6 mm (smaller metal gauge on request)

INTERIOR

- Exposed side 25 µm polyester coating with a PVC protective film (not UV-resistant - protect from direct sunlight).
The film must be removed before installation or immediately afterwards.
- profile 2
- hole proportion: 32.5 %
- bore diameter: 0.12" / 3 mm round bore, offset (0.2" / 5 mm distance)
- holes: DIN RV 3-5 (R3T5) (730-000)
- metal gauge: 24 ga / 0.6 mm (smaller metal gauge on request)

INSULATION CORE

- structural, web-oriented mineral fibre wool
- securely attached to the sheet steel shell
- density approx. 7.50 lb/ft³ or 120 kg/m³, 8.75 lb/ft³ or 140 kg/m³ available on request
- mat: glass fibre mat SM60/10 as trickle protection



STANDARD COLORS

in accordance with BASIC color range

PANEL CONNECTION

Tongue and groove system in which the panels interlink precisely with no thermal bridge.

TENDER TEXT

download from: bruchacom

EXTERNAL MONITORING

National and international tests and quality standards. We will send the certificates on request.

VAPOUR DIFFUSION

Determined by climatic conditions inside building. Panels must be installed vapour tight.

PANEL INSTALLATION

When working with our products, please follow our installation guidelines at bruchacom/downloads



bruchacom

Contact:
 BRUCHA Corp.
 4949 S Syracuse Street, Suite 550
 CO 80237 Denver
 T: 866.BRUCHA1
 M: infousa@bruchacom
bruchacom/bruchamerica.com

