

# BRUCHA panel DP

## €CO-roof

DESIGN AND SURFACES Standard - coil-coated, hot-dip galvanised steel sheet

### EXTERIOR

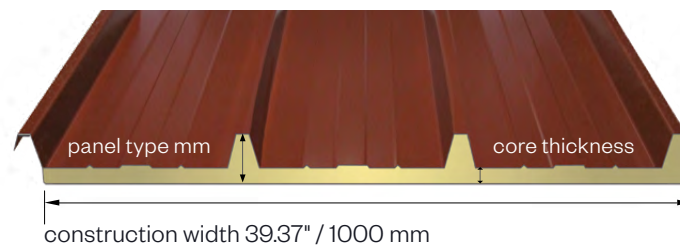
- Exposed side 25 µm polyester coating with a PVC protective film (not UV-resistant - protect from direct sunlight).  
The film must be removed before installation or immediately afterwards.
- profile: Trapezoidal profile, 1.65" / 42 mm (according to diagram)
- crown distance: 13.12" / 333.3 mm
- metal gauge: 24 ga / 0.6 mm (smaller metal gauge on request)

### INTERIOR

- Aluminium lining – Stucco white, layer thickness 80 µm, resistant to organic acids.
- Impairment of the visual impact is possible due to the thin interior shell.
- For areas where the view from below must satisfy the highest visual requirements, we recommend the BRUCHA panel roof – DP with sheet metal interior shell.

### INSULATION CORE

- **nonhalogen** PIR/polyurethane rigid foam, approx. 96 % closed cells, continuously foamed
- absolutely no chlorofluorocarbons or halogenated chlorofluorocarbons – pentane foam process
- low thermal conductivity
- securely attached to the steel sheet
- density approx. 2.50 lb/ft³ or 40 kg/m³



### STANDARD COLORS

in accordance with BASIC color range, identical to BRUCHA panel roof DP

### PANEL CONNECTION

- On the exterior by overlapping of beads, whereby the unfoamed sheet metal part of a panel is laid on the corresponding counterpart of the following panel (including SEALS!).
- capillary break (see drawing)

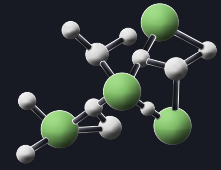
- for agricultural structures
- as protection against the formation of condensation
- at least 0.59" or 15 mm insulation
- reasonably priced alternative to BRUCHA panel PIR+/iQTec roof - DP

# BRUCHA panel DP

## €CO-roof

PIR+  
nonhalogen

iQTec  
foam technology®



Minimum roof pitch 3° (5.2%)

### TRAPEZOID PROFILE exterior

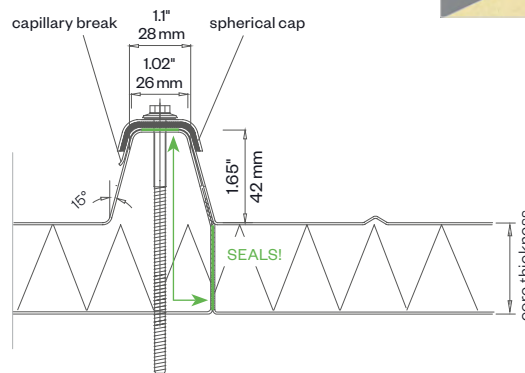
close-up



symbol image - €CO roof



### DETAIL/joint geometry



butt joint:  
0.08" = 0.08" tolerance  
2 mm ± 2 mm tolerance

PANEL TYPE	€CO 57	€CO 72	€CO 102
core thickness in ≈ inch in mm	0.5" 15	1" 30	2.5** 60*
PIR+ non-halogen R-value thermal performance at 75°F	5.5	10	19
weight in lb/ft <sup>2</sup> in kg/m <sup>2</sup>	1.12 5.45	1.24 6.07	1.50 7.32

\*on request

### MANUFACTURING LENGTHS

39' 2" or 11.95 m (44' 3 1/2" or 13.50 m)

### R-VALUE

≈ 7.50 per inch @75°F mean temperature  
≈ 8.25 per inch @35°F mean temperature

### SPAN WIDTH TABLES

according static tables

### PERMANENT TEMPERATURE RESISTANCE

176°F/80°C